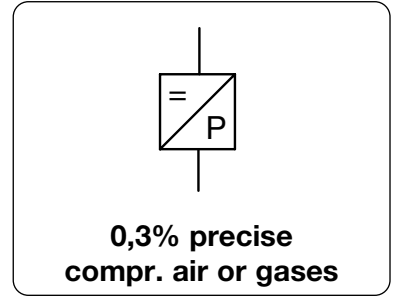


Description	The differential pressure between port P+ and P- is converted into a proportional electrical signal by a silicon pressure sensor, amplified and output as an analog current or voltage signal. compressed air or non-corrosive gases	
Media	14-32 V DC	
Supply voltage	plug M12x1, 4-pin, with coupling socket	
Electrical connector	4-20 mA / 800 Ohm 2-wire, optional 0-10 V / 10 kOhm 3-wire	
Output signal	800 Ohm (4-20 mA); 10 kOhm (0-10 V)	
Input resistance/load	Signal output current: max. 25 mA; signal output voltage: max. 7 mAA	
Current consumption	$\leq \pm 0.35\%$ v.E. (at > 160 mbar); $\leq \pm 1.0\%$ v.E. (at 40-160 mbar); $\leq \pm 2.0\%$ v.E. (at < 40 mbar)	
Linearity/Hysteresis	$\leq \pm 0.2\%$	
Long-term stability	$\leq \pm 0.3\%$ (10 K at < 10 mbar); $\leq \pm 0.25\%$ (10 K < 20 mbar); $\leq \pm 0.15\%$ (10 K at < 250 mbar); $\leq \pm 0.08\%$ (10 K at > 250 mbar)	
Temperature sensitivity	100 g (11 ms)	
Shock resistant	10 g by 20-2000 Hz	
Vibration resistance	-25 ... 125 °C / -13 ... 257 °F	
Media temperature	Body: aluminium (silver anodized)	
Material	Sensor: Silicon, RTV, Ceramic Al2O3	
	Protection class	IP67 according to DIN EN60529
	Temperature range	-25 ... 85 °C Sealing ring: PUR



Dimensions			Overpressure on both connections max. mbar	Measurement range mbar / bar	Order number (4-20 mA)
A	B	C			
mm	mm	mm			

Differential pressure transducer			G1/8, 2-wire, with angular coupling socket	D3	
40	56	5	100	0 ... 6 mbar -6 ... 6 mbar 0 ... 10 mbar -10 ... 10 mbar	D3A-A6 D3A-A6V D3A-B1 D3A-B1V
			200	0 ... 25 mbar -25 ... 25 mbar	D3A-B25 D3A-B25V
			350	0 ... 70 mbar -70 ... 70 mbar	D3A-B7 D3A-B7V
			1000	0 ... 350 mbar	D3A-C35 D3A-C35V
			3000	-350 ... 350 mbar 0 ... 1 bar -1 ... 1 bar	D3A-01 D3A-V1



Transducer

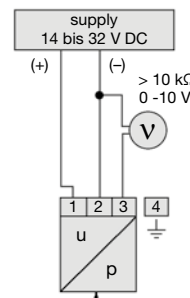
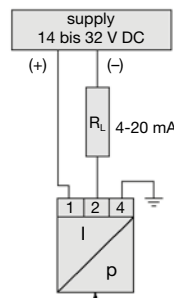
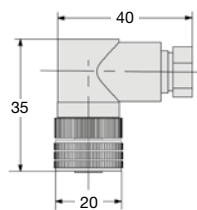
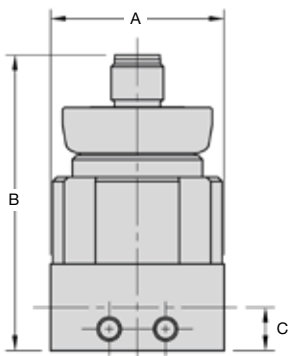
13

Special options, add the appropriate letter or number

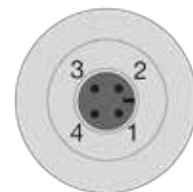
0-10 V output signal	D3V - . .
deviant measurement range on demand	D3 . - XX

Accessories, enclosed

coupling socket 4-pin	M12x1, straight	KM12-A4-0		
socket with cable	2 m, straight	KM12-A4-2	angular	KM12-C4-2
	5 m, straight	KM12-A4-5	angular	KM12-C4-5



pin	colour
1	brown
2	white
3	blue
4	black



* Product group

